



## 4 1/4"W x 2 5/8"D x 5 3/4"H Blackthorne Corbel

- Can support up to 20lbs with proper installation
- Can be cut, drilled, glued, or screwed
- Factory primed and ready for paint or faux finish
- Can be used on the interior or exterior
- High Density urethane for maximum durability and detail
- Modeled after original historical patterns and designs
- This product qualifies for our Lowest Price Guarantee
- Order now and get our 30 day Price Protection

Item #: COR04X02X05BL  
List Price: \$7.27  
**\$5.27** (EACH)  
Save \$2.00 (27%)

Usually ships in 24-72 hours

HEIGHT

5 3/4"

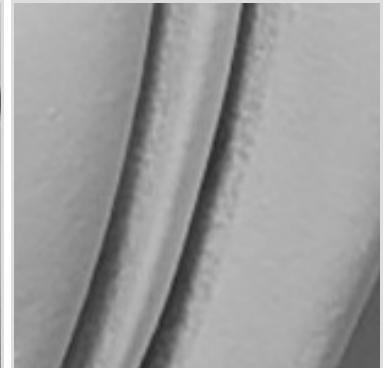
WIDTH

4 1/4"

DEPTH

2 5/8"

### MORE IMAGES



### WE ARE HERE FOR YOU...

#### Our Selection

Having the right tools at the right time is crucial. So is having the right products at the right price. We are not bound by a single warehouse location and limited style or size availabilities. We work directly with over 70 different manufacturers nationwide. This means we have direct control on availability, customizability, and quality.

Order online at: <http://www.architecturaldepot.com/COR04X02X05BL.html>

Date Printed: 04/20/2024 - 2:15 am