



6 3/4"W x 5 1/2"D x 9 1/2"H, Medium Block Acanthus Leaf Corbel

- Precision carved and available in alder, cherry, maple, red oak, walnut, mahogany, or paint grade wood
- Wood corbels and brackets arrive sanded and ready to be painted or stained
- Ideal for countertops, bars, shelves, kitchen islands, range hoods, mantels, furniture and more.
- Carved wood corbels and brackets can be used for decorative or load-bearing applications and can support up to 250lbs with proper installation.
- Most brackets and corbels have the same style in multiple sizes, ranging from 3" to 35" in height!
- Quick and easy DIY installation with wood glue and nails or screws
- This product qualifies for our Lowest Price Guarantee
- Order now and get our 30 day Price Protection

Item #: CORBA4
List Price: \$170.13
\$123.28 (EACH)
Save \$46.85 (27%)

Usually ships in 24-72 hours

HEIGHT

9 1/2"

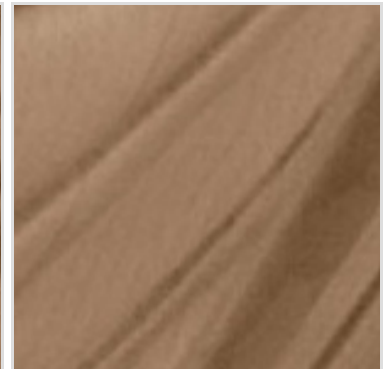
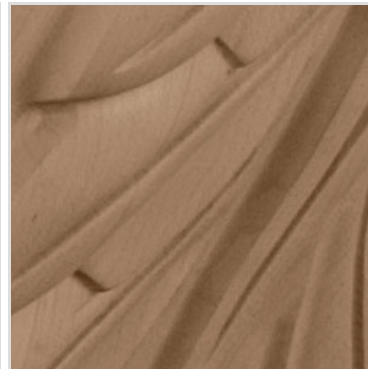
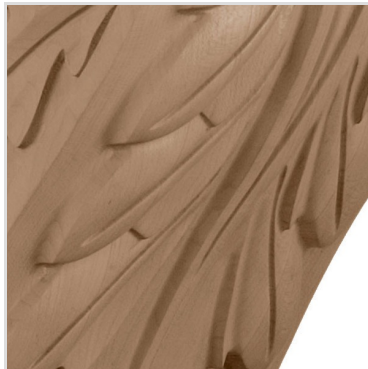
WIDTH

6 3/4"

DEPTH

5 1/2"

MORE IMAGES



DESCRIPTION

Enjoy the warmth and beauty of authentic hand-carved hardwood brackets and corbels. With the proper installation, our wood brackets and corbels can support up to 250lbs, which gives you the flexibility to use in decorative applications or load bearing. Available in a variety of wood species, including paint grade, these brackets and corbels are sure to suit any project needs. They arrive sanded and ready for paint or stain.

Order online at: <http://www.architecturaldepot.com/CORBA4.html>

Date Printed: 04/18/2024 - 10:05 pm