

16" Bottom > 11" Top x 96" Height Tapered Raised Panel Fypon Column Wrap

- Our two-piece design cuts installation time and allows for more installation flexibility than competitive products
- Installs around the support structure so the integrity of the column is not dependent on the structural post
- Allows for flexible positioning - our unique design has the installation cleats on the exterior of the column, which provides room around the support post.
- Available in multiple styles suitable for both interior and exterior applications
- Constructed of durable PVC that won't rot, chip or flake, and covered by a limited lifetime warranty
- Perfect alternative to using wood column wraps
- This product qualifies for our Lowest Price Guarantee
- Order now and get our 30 day Price Protection

Item #:
CWPM11X16X96TRS
List Price: \$612.25
\$443.66 (EACH)
Save \$168.59 (27%)

Usually ships in 5-7 business days

HEIGHT

96"

BOTTOM WIDTH

16"

DEPTH

16"

WIDTH

16"

TOP WIDTH

11"

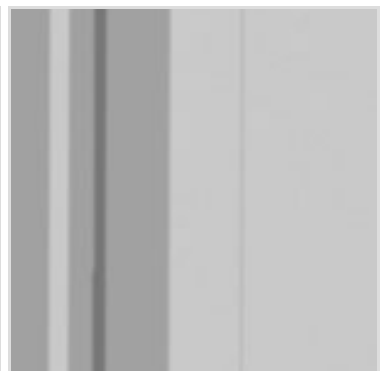
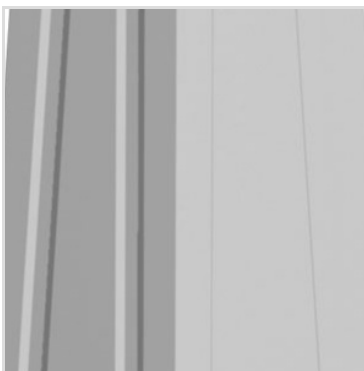
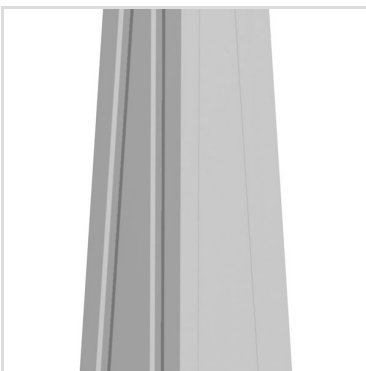
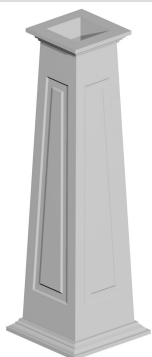
INSIDE WIDTH

9 1/2"

THICKNESS

1/2"

MORE IMAGES



DESCRIPTION

Elegant and easy to install around an existing structural support, Fypon column wraps allow you to add the sophistication of traditional columns near the end of a building project - protecting columns from incidental damage on the job site. Our unique design makes installation a breeze, and all of our column wraps are sold as a kit with everything you need to complete your project.

Order online at: <http://www.architecturaldepot.com/CWKT86183.html>

Date Printed: 04/19/2024 - 1:49 pm