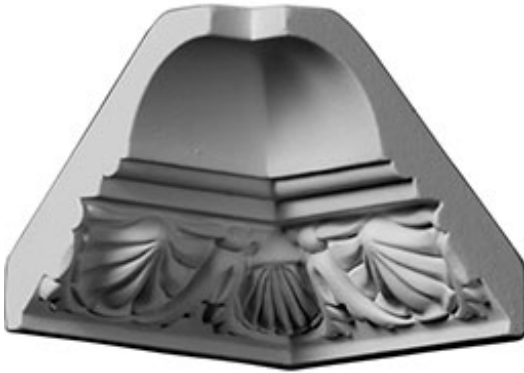


2 3/4"P x 2 7/8"H Inside Corner Moulding (matches moulding MLD02X02X02SH)



- Install crown moulding in minutes not days
- Matches beautifully to the moulding profile
- Install crown without a single miter cut
- The best choice for installing crown moulding
- Can be glued or nailed
- Factory primed and ready for your paint
- This product qualifies for our Lowest Price Guarantee
- Order now and get our 30 day Price Protection

Item #: MIC02X02SH
List Price: \$7.77
\$5.63 (EACH)
Save \$2.14 (27%)

Usually ships in 24-72 hours

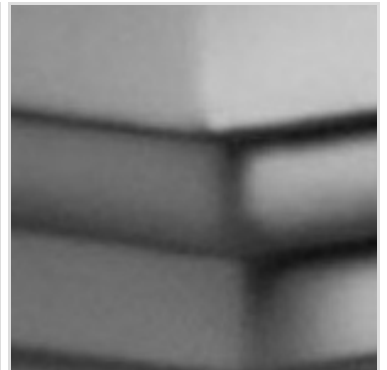
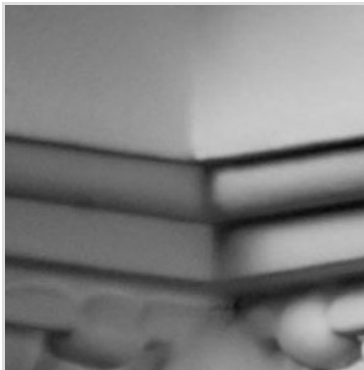
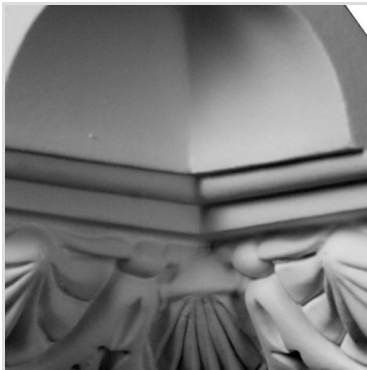
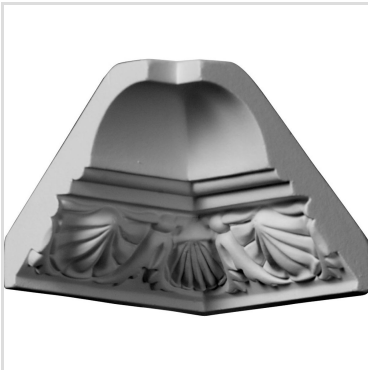
HEIGHT

2 7/8"

PROJECTION

2 3/4"

MORE IMAGES



DESCRIPTION

Increase the value of your home and transform ordinary to interesting with over 400 designs, we have something to match every decor style. Renovate a room or two faster and easier than before with our lightweight durable urethane crown mouldings. Compared to traditional trim materials, our products give you the look and feel of authentic wood or plaster for less. Factory primed, it comes ready for paint, gel stain, or faux finish; making it ideal for a variety of interior and exterior applications.

Order online at: <http://www.architecturaldepot.com/MIC02X02SH.html>

Date Printed: 04/19/2024 - 11:33 am