

4 3/8"H x 3 1/8"P x 5 1/4"F x 94 1/2"L, (3" Repeat), Dentil Crown Moulding



- Lightweight for quick and easy installation
- Solid urethane for maximum durability and minimal upkeep
- Sharp design clarity and high quality, limitless pattern options
- Can be cut, drilled, glued or screwed with common tools
- Factory primed and ready for paint or faux finish
- Impervious to moisture and rot
- This product qualifies for our Lowest Price Guarantee
- Order now and get our 30 day Price Protection

Item #: MLD05X04X05DE
List Price: \$32.73
\$23.72 (EACH)
Save \$9.01 (27%)

Usually ships in 24-72 hours

LENGTH

94 1/2"

FACE

5 1/4"

HEIGHT

4 3/8"

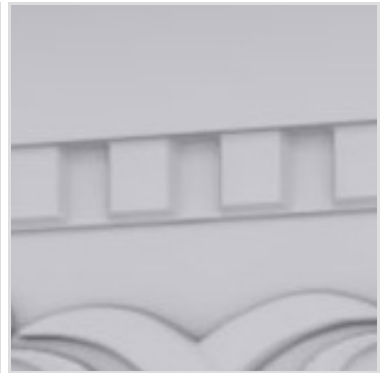
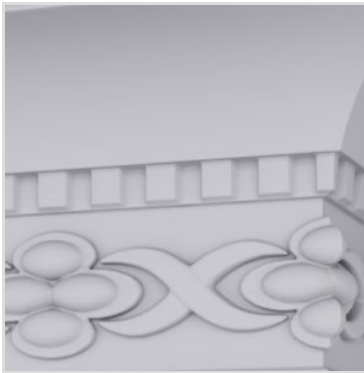
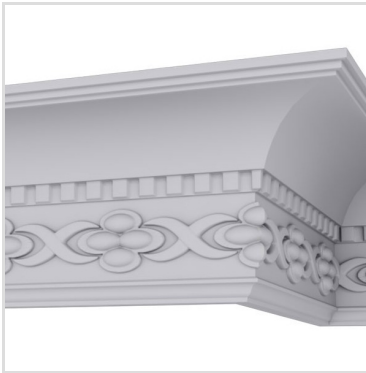
PROJECTION

3 1/8"

REPEAT

3"

MORE IMAGES



DESCRIPTION

Increase the value of your home and transform ordinary to interesting with over 400 designs, we have something to match every decor style. Renovate a room or two faster and easier than before with our lightweight durable urethane crown mouldings. Compared to traditional trim materials, our products give you the look and feel of authentic wood or plaster for less. Factory primed, it comes ready for paint, gel stain, or faux finish; making it ideal for a variety of interior and exterior applications.

Order online at: <http://www.architecturaldepot.com/MLD05X04X05DE.html>

Date Printed: 04/19/2024 - 12:07 am