



7 1/4\"/>

- Can be cut, drilled, screwed, or nailed
- Similar density to that of pine
- Beautiful details and design
- Factory primed and ready for paint
- Can be painted or faux finished
- Lightweight for easy installation
- This product qualifies for our Lowest Price Guarantee
- Order now and get our 30 day Price Protection

Item #: MLD1020-12

List Price: \$70.31

\$50.95 (EACH)

Save \$19.36 (27%)

Usually ships in 5-7 business
days

LENGTH

144"

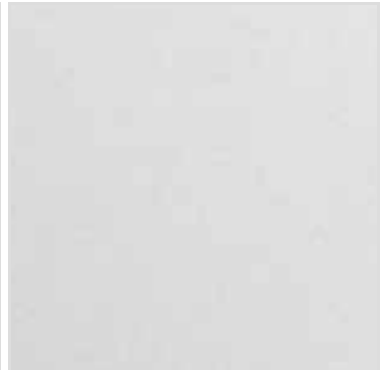
HEIGHT

7 1/4"

PROJECTION

1 1/8"

MORE IMAGES



DESCRIPTION

Surfaced four sides boards (S4S) is smooth on all four sides making it versatile enough for any moulding application. Choose for a pure, natural look with timeless quality.

Order online at: <http://www.architecturaldepot.com/MLD1020-12.html>

Date Printed: 04/20/2024 - 7:21 am