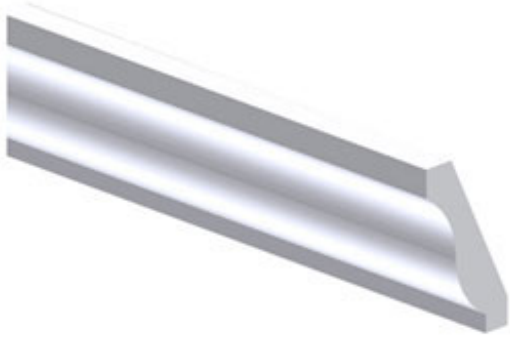


2 3/4"W x 4 3/4"P, 16' Length, Crown Moulding



- Will not crack, warp, or split
- Protected from natural elements
- Outlasts resin, plastics, wood and aluminum products
- Lifetime Warranty
- Lightweight and easy to install
- This product qualifies for our Lowest Price Guarantee
- Order now and get our 30 day Price Protection

Item #: MLD467-16
List Price: \$126.89
\$91.95 (EACH)
Save \$34.94 (27%)

Usually ships in 5-7 business days

LENGTH

192"

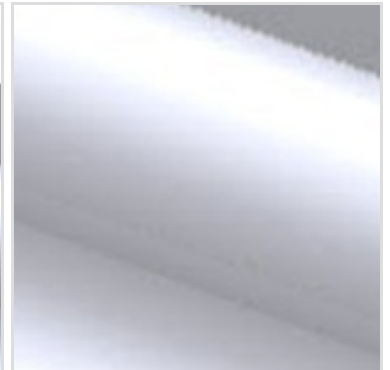
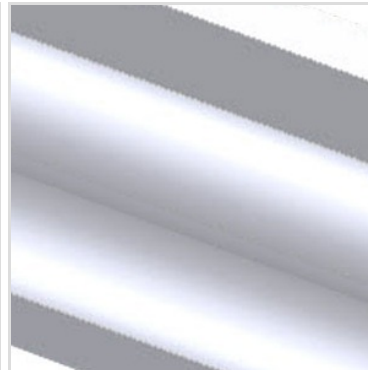
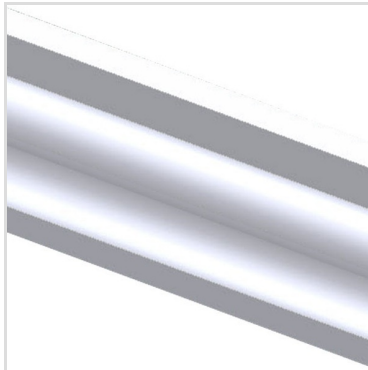
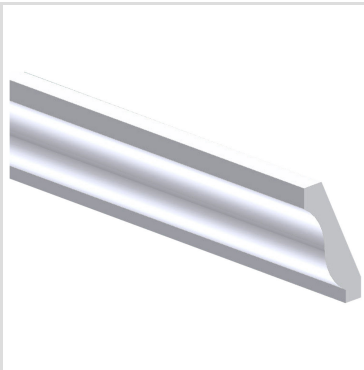
HEIGHT

4 3/4"

PROJECTION

2 3/4"

MORE IMAGES



DESCRIPTION

Introducing our innovative urethane moulding collection, redefining elegance and durability in interior design. Crafted with advanced urethane technology, our mouldings capture the timeless appeal of traditional wood without the maintenance challenges. Resistant to moisture, rot, and insects, these mouldings are ideal for both interior and exterior applications, offering unparalleled longevity and performance.

Order online at: <http://www.architecturaldepot.com/MLD467-16.html>

Date Printed: 04/19/2024 - 6:41 am