

4 1/2"W x 2 3/8"H x 1/4"P Springtime Center Onlay



- Modeled after original historical patterns and designs
- Solid urethane for maximum durability and detail
- Lightweight for quick and easy installation
- Factory primed and ready for paint or faux finish
- Can be cut, drilled, glued, or screwed
- Can be used on the interior or exterior
- This product qualifies for our Lowest Price Guarantee
- Order now and get our 30 day Price Protection

Item #: ONL04X02SP

List Price: \$8.28

\$6.00 (EACH)

Save \$2.28 (27%)

Usually ships in 24-72 hours

WIDTH

4 1/2"

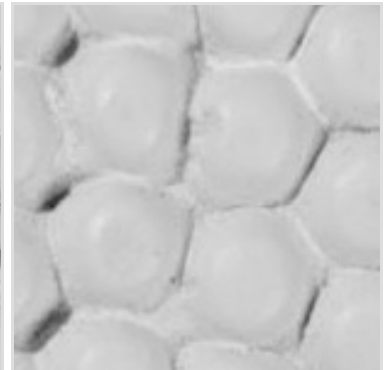
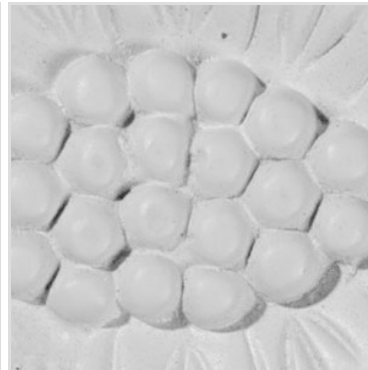
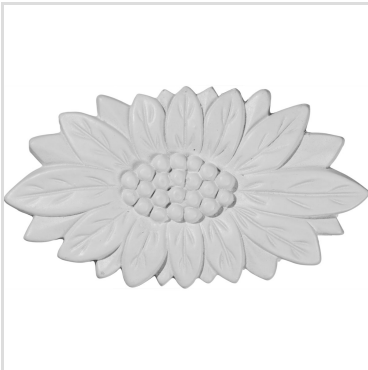
HEIGHT

2 3/8"

PROJECTION

1/4"

MORE IMAGES



WE ARE HERE FOR YOU...

Our Selection

Having the right tools at the right time is crucial. So is having the right products at the right price. We are not bound by a single warehouse location and limited style or size availabilities. We work directly with over 70 different manufacturers nationwide. This means we have direct control on availability, customizability, and quality.

Order online at: <http://www.architecturaldepot.com/ONL04X02SP.html>

Date Printed: 03/28/2024 - 10:45 am