



Pergola Bolt Down Bracket Kit (2pk), Galvanized Steel

- Compliments, defines and enhances arbor entrance
- Maintenance free: Easy to maintain and clean
- 20-year warranty
- This product qualifies for our Lowest Price Guarantee
- Order now and get our 30 day Price Protection

Item #: VA80206
List Price: \$96.59
\$69.99 (2/PK)
Save \$26.60 (27%)

FREE Shipping!
Usually ships in 5-7 business days

HEIGHT

6 $\frac{1}{8}$ "

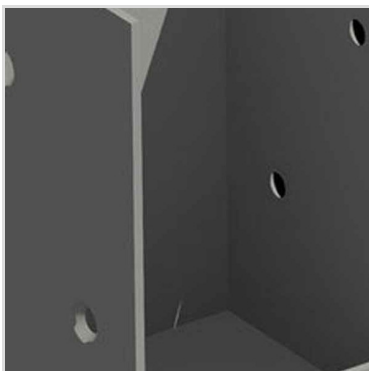
WIDTH

4 $\frac{5}{8}$ "

LENGTH

4 $\frac{5}{8}$ "

MORE IMAGES



DESCRIPTION

The Bolt Down Bracket System enables pergola owners to mount their pergola safely and securely to a wood deck or cement patio. Simply measure your footprint and bolt the galvanized steel brackets into place. Insert 4 x 4 (10cm X 10cm) pressure treated wood posts (purchased separately) into the brackets and screw them in place. Slide your pergola posts over the wood posts, and screw the pergola posts into the wood.

The result is a lasting installation that is safe and rigid. This mounting system was specifically designed for Vita brand pergolas. We highly recommend that if you are installing any of these vinyl pergolas on a flat surface, you purchase this kit. The mounting system comes with brackets and 1.5" (3.8cm) self-tapping screws.

The Bolt Down Brackets are guaranteed for 5 years against defects.

Important Note: DO NOT use the bolt down bracket system for installing the pergola over concrete pavers, patio stones, or interlocking bricks

Extra Materials Required

Depending on the type of installation, you will be required to purchase the following hardware:

If mounting Pergola onto an existing concrete surface:

- 1/4" x 2 3/4" Cement Screws – Countersunk head (12)
 - 3/16" Concrete drill bit. Minimum 3" long (1)
 - 4x4x ?* pressure treated wood posts if using for a pergola (4)
- *(length depends on the pergola selected)
- 1/2" x 3 1/2"x 12" long wood shims to "build out" posts (32)

If mounting Pergola onto a wooden or composite deck with AN ACCESSIBLE UNDERSIDE:

- 1/4" x ?" Bolts and nuts – Countersunk Head (12)
 - 1/4" Washers (12) (length depends on blocking material)
 - 1/4" Wood drill bit. Minimum 3" long (1)
 - 4x4x ?* pressure treated wood posts if using for a pergola (4)
- *(length depends on the pergola selected)
- 1/2" x 3 1/2"x 12" long wood shims to "build out" posts (32)

Order online at: <http://www.architecturaldepot.com/VA80206.html>

Date Printed: 04/18/2024 - 4:02 pm