

18 1/2"W x 9 3/8"H x 2 1/8"D Foundation Master Molded Kit, Fixed Louver for New Construction or Remodeling, 10/Pack

- 1/4" molded-in screen for protection against natural elements
- 50 sq. in. net free ventilation area
- Includes optional fixed louver
- For new construction or remodeling applications
- This product qualifies for our Lowest Price Guarantee
- Order now and get our 30 day Price Protection

Item #: 00036400
List Price: \$296.18
\$214.62 (EACH)
Save \$81.56 (27%)

FREE Shipping!
Usually ships in 16-21 business days

WIDTH

18 1/2"

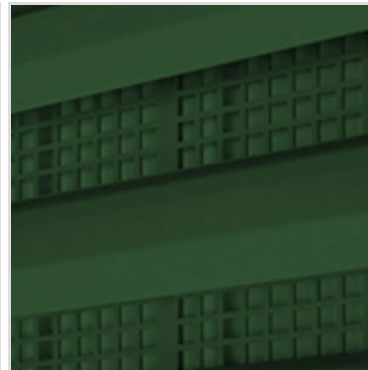
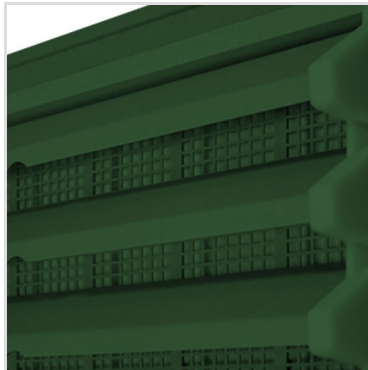
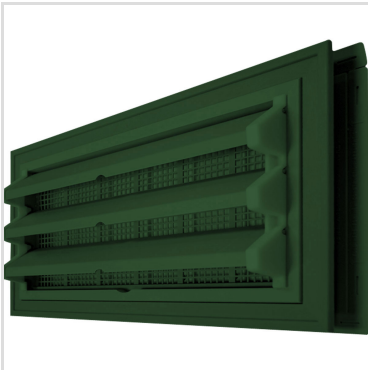
HEIGHT

9 3/8"

DEPTH

2 1/8"

MORE IMAGES



WE ARE HERE FOR YOU...

Our Selection

Having the right tools at the right time is crucial. So is having the right products at the right price. We are not bound by a single warehouse location and limited style or size availabilities. We work directly with over 70 different manufacturers nationwide. This means we have direct control on availability, customizability, and quality.

Order online at: <https://www.architecturaldepot.com/00036400.html>

Date Printed: 04/19/2024 - 9:47 am