



7"W x 6 3/8"H x 1 3/4"P Corinthian Pilaster Capital (Fits Pilasters up to 4 3/8"W x 7/8"D)

- Modeled after original historical patterns and designs
- Solid urethane for maximum durability and detail
- Lightweight for quick and easy installation
- Factory primed and ready for paint or faux finish
- Can be cut, drilled, glued, or screwed
- Can be used on the interior or exterior
- This product qualifies for our Lowest Price Guarantee
- Order now and get our 30 day Price Protection

Item #: CAP07X06X02RC
List Price: \$12.74
\$9.23 (EACH)
Save \$3.51 (27%)

Usually ships in 24-72 hours

WIDTH

7"

HEIGHT

6 $\frac{3}{8}$ "

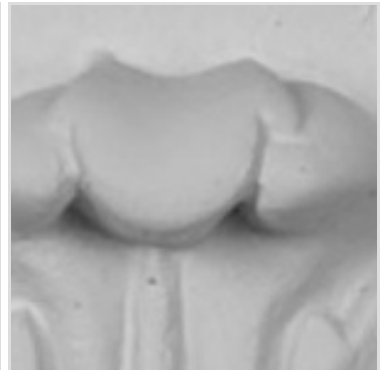
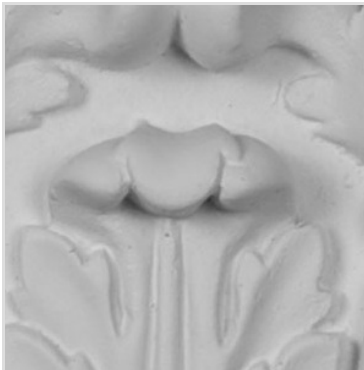
BOTTOM WIDTH

4 $\frac{3}{8}$ "

PROJECTION

1 $\frac{3}{4}$ "

MORE IMAGES



DESCRIPTION

Modeled after original historical patterns, poly-urethane capitals provide the look of authentic wood capitals at a fraction of the cost. The capitals will not rot, crack or split. Backed by a limited lifetime warranty, urethane capitals are an ideal choice for any homeowner.

Order online at: <https://www.architecturaldepot.com/CAP07X06X02RC.html>

Date Printed: 03/29/2024 - 2:31 am