

## 3 1/8"H x 3/4"P x 94 1/2"L, (3 7/8" Repeat), Large Federal Chair Rail



- Can be cut, drilled, screwed, or nailed
- Similar density to that of pine
- Beautiful details and design
- Factory primed and ready for paint
- Can be painted or faux finished
- Lightweight for easy installation
- This product qualifies for our Lowest Price Guarantee
- Order now and get our 30 day Price Protection

Item #: CHA03X00FE  
List Price: \$22.18  
**\$16.07 (EACH)**  
Save \$6.11 (27%)

Usually ships in 24-72 hours

LENGTH

94 1/2"

REPEAT

3 7/8"

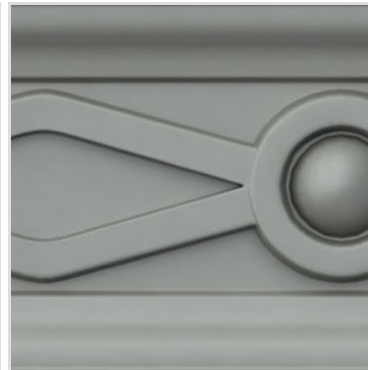
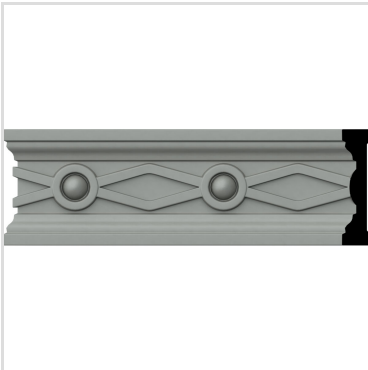
HEIGHT

3 1/8"

PROJECTION

3/4"

### MORE IMAGES



### DESCRIPTION

Our beautiful chair rail adds a decorative, historic, feel to walls, ceilings and furniture pieces. They are made from a high density urethane which gives each piece the unique details that mimic that of traditional plaster and wood designs, but at a fraction of the weight. This means a simple and easy installation for you. These are also commonly used for an inexpensive wainscot look.

Order online at: <https://www.architecturaldepot.com/CHA03X00FE.html>

Date Printed: 04/19/2024 - 11:51 pm