



- Comes factory primed and ready to paint
- Easily install it with fully bonded adhesive or nails
- Perfect for exterior and interior applications
- Composed of high-density polyurethane, making it a durable yet lightweight product
- Impervious to natural elements
- Customize with keystones, pilasters and pediments for an extraordinary look
- This product qualifies for our Lowest Price Guarantee
- Order now and get our 30 day Price Protection

Item #: CRH06X168ST
List Price: \$241.87
\$175.27 (EACH)
Save \$66.60 (27%)

Usually ships in 3-5 business days

TOP WIDTH

170 1/2"

BOTTOM WIDTH

168"

HEIGHT

5 1/2"

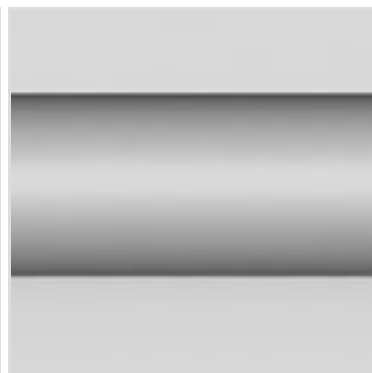
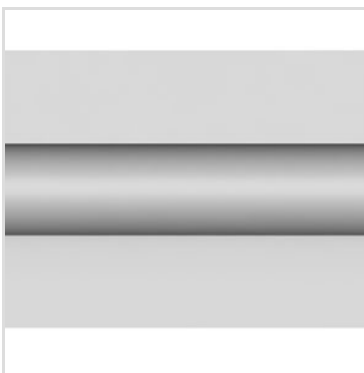
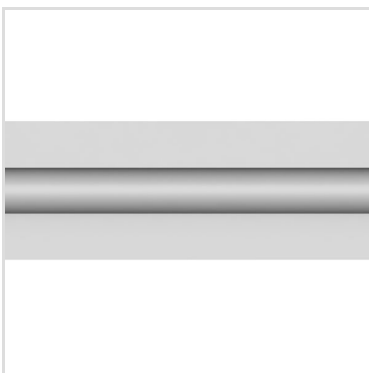
TOP PROJECTION

3"

PROJECTION

1 3/4"

MORE IMAGES



DESCRIPTION

Remodelers, builders, and homeowners looking to enhance their next project by adding more curb appeal to the exterior of a home should consider crossheads. Crossheads are large casings that are typically placed at the top of a window, doorway or large entryway. Made of lightweight, yet durable high-density polyurethane, crossheads are easy for anyone to install. Feel free to choose from an amazing selection of sizes and style that will suit your project needs.

Order online at: <https://www.architecturaldepot.com/CRH06X168ST.html>

Date Printed: 04/16/2024 - 4:03 pm