



33 15/16"W x 33 15/16"H x 1 5/8"P Brick Mould Style Diamond Gable Vent Louver, Non-Functional

- Manufactured out of Urethane
- An easy way to enhance the look of your home
- Fully primed and ready for paint
- Will not crack, warp, or split
- Lightweight and easy to install
- Urethane expertly withstands water and natural elements
- This product qualifies for our Lowest Price Guarantee
- Order now and get our 30 day Price Protection

Item #: DLV24X24
List Price: \$84.75
\$61.41 (EACH)
Save \$23.34 (27%)

Usually ships in 5-7 business days

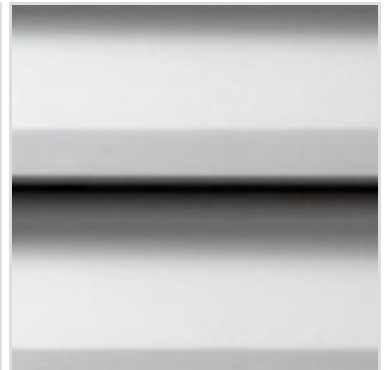
WIDTH

34"

HEIGHT

34"

MORE IMAGES



WE ARE HERE FOR YOU...

Our Selection

Having the right tools at the right time is crucial. So is having the right products at the right price. We are not bound by a single warehouse location and limited style or size availabilities. We work directly with over 70 different manufacturers nationwide. This means we have direct control on availability, customizability, and quality.

Order online at: <https://www.architecturaldepot.com/DLV24X24.html>

Date Printed: 04/18/2024 - 12:54 am