



2 3/4"W x 3 1/8"H x 2 7/16"P Recessed Keystone (for use with MLDWM180)

- Will not crack, warp, or split
- Protected from natural elements
- Outlasts resin, plastics, wood and aluminum products
- Lifetime Warranty
- Lightweight and easy to install
- This product qualifies for our Lowest Price Guarantee
- Order now and get our 30 day Price Protection

Item #: KWM180M
List Price: \$14.56
\$10.55 (EACH)
Save \$4.01 (27%)

Usually ships in 5-7 business days

HEIGHT

3 1/8"

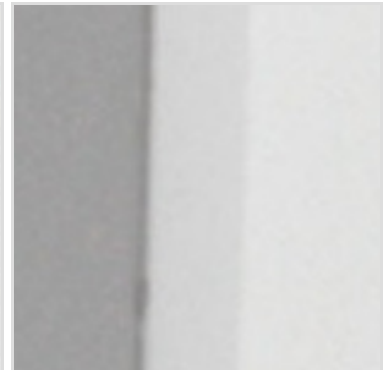
WIDTH

2 3/4"

PROJECTION

2 3/8"

MORE IMAGES



DESCRIPTION

Keystones adorn window trim, entry door systems, crossheads, garage doors and arch casing. These timeless accents offer classic historical and decorative detail. Our lightweight keystones can be installed during new construction or after as a renovation. For use with select crosshead and casing profiles.

Order online at: <https://www.architecturaldepot.com/KWM180M.html>

Date Printed: 04/18/2024 - 8:30 pm