



8 5/8"P x 5 7/8"H, Traditional Inside Corner

- Makes moulding installation a breeze
- Eliminates miter cuts
- A true DIY crown moulding installation
- Factory primed and ready for paint
- Can be painted or faux finished
- Lightweight for easy installation
- This product qualifies for our Lowest Price Guarantee
- Order now and get our 30 day Price Protection

Item #: MIC09X06
List Price: \$20.11
\$14.57 (EACH)
Save \$5.54 (27%)

Usually ships in 24-72 hours

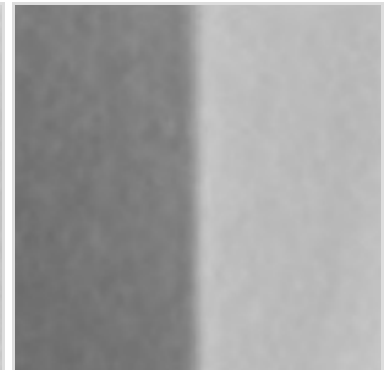
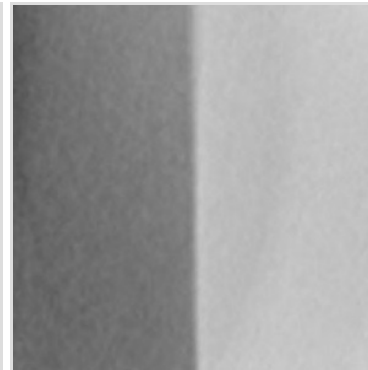
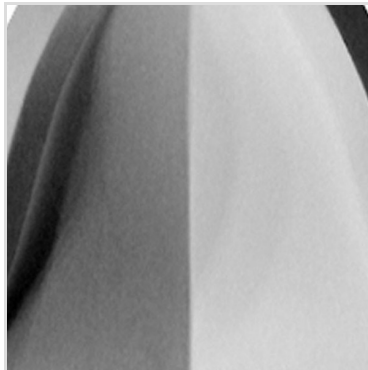
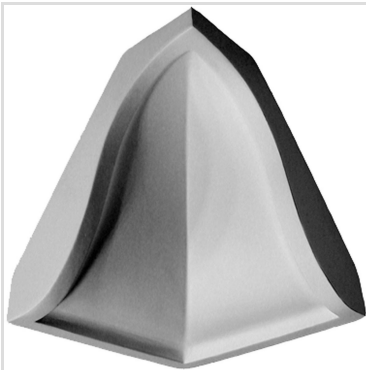
PROJECTION

8 5/8"

HEIGHT

5 7/8"

MORE IMAGES



DESCRIPTION

Increase the value of your home and transform ordinary to interesting with over 400 designs, we have something to match every decor style. Renovate a room or two faster and easier than before with our lightweight durable urethane crown mouldings. Compared to traditional trim materials, our products give you the look and feel of authentic wood or plaster for less. Factory primed, it comes ready for paint, gel stain, or faux finish; making it ideal for a variety of interior and exterior applications.

Order online at: <https://www.architecturaldepot.com/MIC09X06.html>

Date Printed: 04/18/2024 - 3:22 pm