

## 1 1/2"H x 1 1/2"P x 2 1/8"F x 94 1/2"L Cole Smooth Corner Moulding



- Modeled after original historical patterns and designs
- Solid urethane for maximum durability and detail
- Lightweight for quick and easy installation
- Factory primed and ready for paint or faux finish
- Can be cut, drilled, glued, or screwed
- Can be used on the interior or exterior
- This product qualifies for our Lowest Price Guarantee
- Order now and get our 30 day Price Protection

Item #: MLD01X01X02CO  
List Price: \$14.09  
**\$10.21** (EACH)  
Save \$3.88 (27%)

Usually ships in 24-72 hours

LENGTH

94 1/2"

FACE

2 1/8"

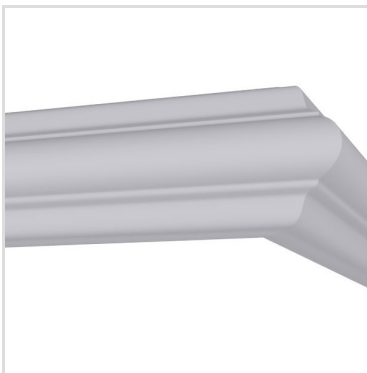
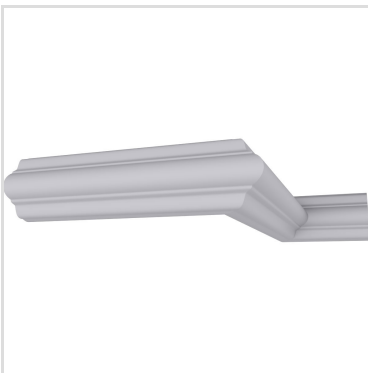
PROJECTION

1 1/2"

HEIGHT

1 1/2"

### MORE IMAGES



### DESCRIPTION

Increase the value of your home and transform ordinary to interesting with over 400 designs, we have something to match every decor style. Renovate a room or two faster and easier than before with our lightweight durable urethane crown mouldings. Compared to traditional trim materials, our products give you the look and feel of authentic wood or plaster for less. Factory primed, it comes ready for paint, gel stain, or faux finish; making it ideal for a variety of interior and exterior applications.

Order online at: <https://www.architecturaldepot.com/MLD01X01X02CO.html>

Date Printed: 04/19/2024 - 9:29 am