

## 2 1/8"P x 2 1/8"H Outside Corner Moulding (matches moulding MLD02X02X03EG)



- Install crown moulding in minutes not days
- Matches beautifully to the moulding profile
- Install crown without a single miter cut
- The best choice for installing crown moulding
- Can be glued or nailed
- Factory primed and ready for your paint
- This product qualifies for our Lowest Price Guarantee
- Order now and get our 30 day Price Protection

Item #: MOC02X02EG  
List Price: \$4.66  
**\$3.38** (EACH)  
Save \$1.28 (27%)

Usually ships in 24-72 hours

WIDTH

2 1/8"

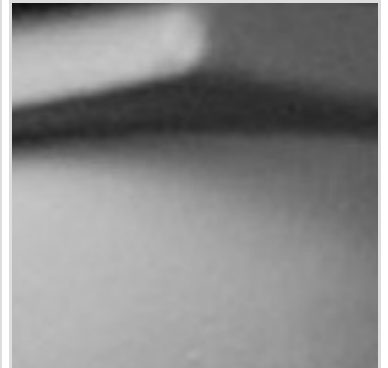
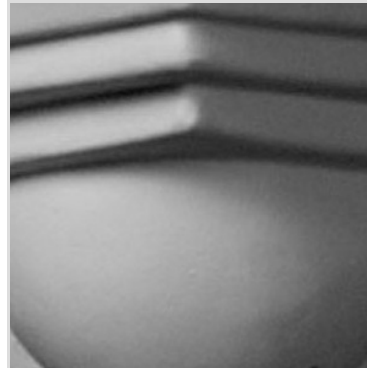
PROJECTION

2 1/8"

HEIGHT

2 1/8"

### MORE IMAGES



### DESCRIPTION

Beautiful crown moulding is a great way to separate and define each room. With each design modeled after traditional plaster type mouldings, our lightweight polyurethane mouldings give the same rich detail, yet at a fraction of the cost. Most moulding profiles can be partnered with our do-it-yourself corner blocks that means no miter cutting for you, and most rooms can be completed in ours instead of days. Another benefit of polyurethane is it will not rot, crack, or warp. It comes to you factory primed and ready for your paint, faux finish, gel stain, marbleizing and more.

Order online at: <https://www.architecturaldepot.com/MOC02X02EG.html>

Date Printed: 04/19/2024 - 2:31 pm