



2 1/4\"P x 4\"H Outside Corner for Holmdel Traditional Smooth Crown Moulding (matches moulding MLD04X02X04HO)

- Modeled after original historical patterns and designs
- Solid urethane for maximum durability and detail
- Lightweight for quick and easy installation
- Factory primed and ready for paint or faux finish
- Can be cut, drilled, glued, or screwed
- Can be used on the interior or exterior
- This product qualifies for our Lowest Price Guarantee
- Order now and get our 30 day Price Protection

Item #: MOC04X02HO

List Price: \$7.63

\$5.53 (EACH)

Save \$2.10 (27%)

Usually ships in 24-72 hours

HEIGHT

4"

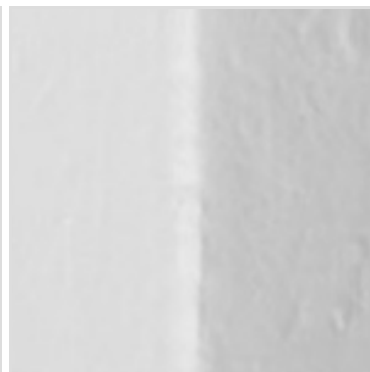
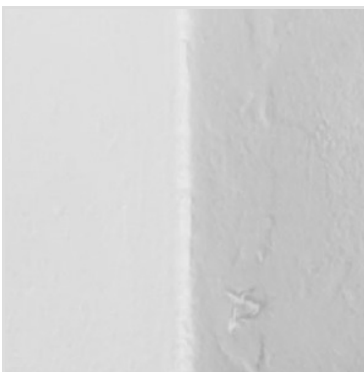
WIDTH

4"

PROJECTION

2 1/4"

MORE IMAGES



DESCRIPTION

Beautiful crown moulding is a great way to separate and define each room. With each design modeled after traditional plaster type mouldings, our lightweight polyurethane mouldings give the same rich detail, yet at a fraction of the cost. Most moulding profiles can be partnered with our do-it-yourself corner blocks that means no miter cutting for you, and most rooms can be completed in ours instead of days. Another benefit of polyurethane is it will not rot, crack, or warp. It comes to you factory primed and ready for your paint, faux finish, gel stain, marbleizing and more.

Order online at: <https://www.architecturaldepot.com/MOC04X02HO.html>

Date Printed: 04/19/2024 - 11:54 pm