

## 5 1/8"W x 4 5/8"H, Outside Corner for Moulding Profiles



- Makes moulding installation a breeze
- Eliminates miter cuts
- A true DIY crown moulding installation
- Factory primed and ready for paint
- Can be painted or faux finished
- Lightweight for easy installation
- This product qualifies for our Lowest Price Guarantee
- Order now and get our 30 day Price Protection

Item #: MOC04X04BX  
List Price: \$10.96  
**\$7.94** (EACH)  
Save \$3.02 (27%)

Usually ships in 24-72 hours

WIDTH

5 1/8"

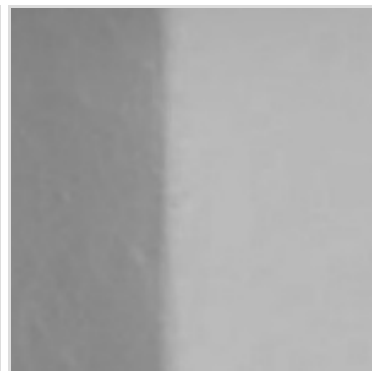
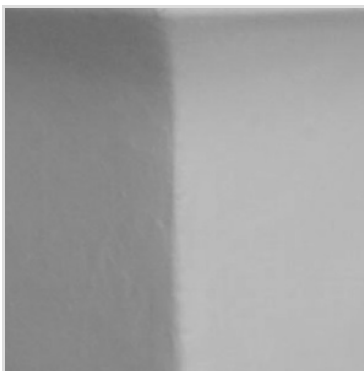
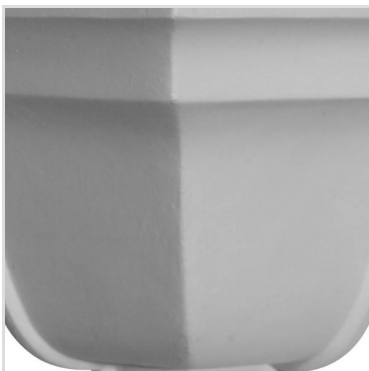
PROJECTION

5 1/8"

HEIGHT

4 5/8"

### MORE IMAGES



### DESCRIPTION

Beautiful crown moulding is a great way to separate and define each room. With each design modeled after traditional plaster type mouldings, our lightweight polyurethane mouldings give the same rich detail, yet at a fraction of the cost. Most moulding profiles can be partnered with our do-it-yourself corner blocks that means no miter cutting for you, and most rooms can be completed in ours instead of days. Another benefit of polyurethane is it will not rot, crack, or warp. It comes to you factory primed and ready for your paint, faux finish, gel stain, marbleizing and more.

Order online at: <https://www.architecturaldepot.com/MOC04X04BX.html>

Date Printed: 04/19/2024 - 1:50 pm