

## 12 5/8"W x 6 3/4"H x 1"P Large Grape and Leaf Onlay, Right



- Modeled after original historical patterns and designs
- Solid urethane for maximum durability and detail
- Lightweight for quick and easy installation
- Factory primed and ready for paint or faux finish
- Can be cut, drilled, glued, or screwed
- Can be used on the interior or exterior
- This product qualifies for our Lowest Price Guarantee
- Order now and get our 30 day Price Protection

Item #: ONL12X06X01GR-R  
List Price: \$18.59  
**\$13.47 (EACH)**  
Save \$5.12 (27%)

Usually ships in 24-72 hours

WIDTH

12 5/8"

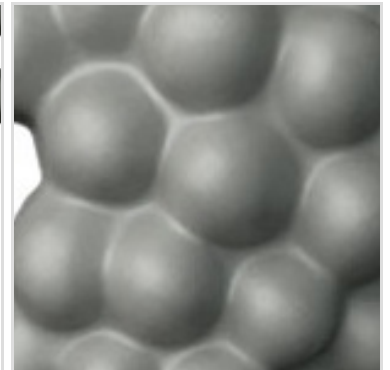
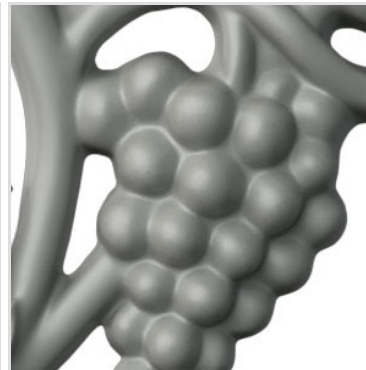
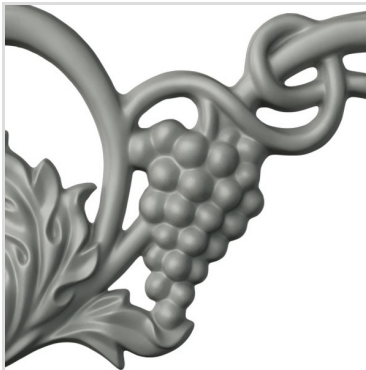
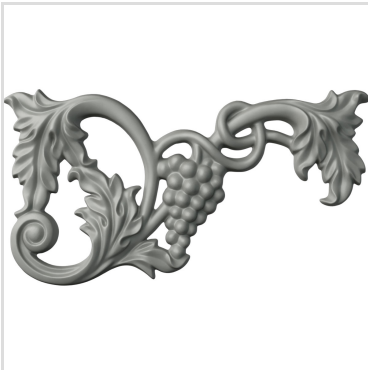
HEIGHT

6 3/4"

PROJECTION

1"

### MORE IMAGES



### DESCRIPTION

Our onlays are the perfect accent pieces for your projects. Choose from an amazing selection of designs and patterns that are historical, seasonal or even whimsical. Give character to your cabinetry, furniture and room or take your kid's school projects and crafts to the next level! The possibilities are endless. Each piece is carefully crafted with rich details and will be looking great wherever its used.

Order online at: <https://www.architecturaldepot.com/ONL12X06X01GR-R.html>

Date Printed: 05/10/2024 - 7:32 pm