

## 12"W x 4 3/8"H x 4 1/8"P Versailles Shelf



- Modeled after original historical patterns and designs
- Solid urethane for maximum durability and detail
- Lightweight for quick and easy installation
- Factory primed and ready for paint or faux finish
- Can be cut, drilled, glued, or screwed
- Can be used on the interior or exterior
- This product qualifies for our Lowest Price Guarantee
- Order now and get our 30 day Price Protection

Item #: SH12X04X04VE  
List Price: \$26.08  
**\$18.90** (EACH)  
Save \$7.18 (27%)

Usually ships in 24-72 hours

WIDTH

12"

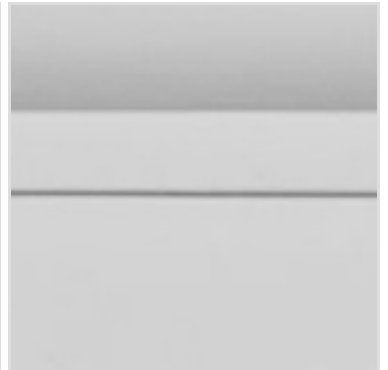
HEIGHT

4  $\frac{3}{8}$ "

PROJECTION

4  $\frac{1}{8}$ "

### MORE IMAGES



### DESCRIPTION

These shelves are truly unique in design and function. Primarily used in decorative applications urethane shelves can make a dramatic difference in kitchens, bathrooms, entryways, fireplace surrounds and more. This material is also perfect for exterior applications. It will not rot or crack and holds up strongly to natural elements. It comes to you factory primed and ready for your paint, faux finish, gel stain, marbleizing and more. With these shelves, you are only limited by your imagination.

Order online at: <https://www.architecturaldepot.com/SH12X04X04VE.html>

Date Printed: 03/29/2024 - 2:59 am